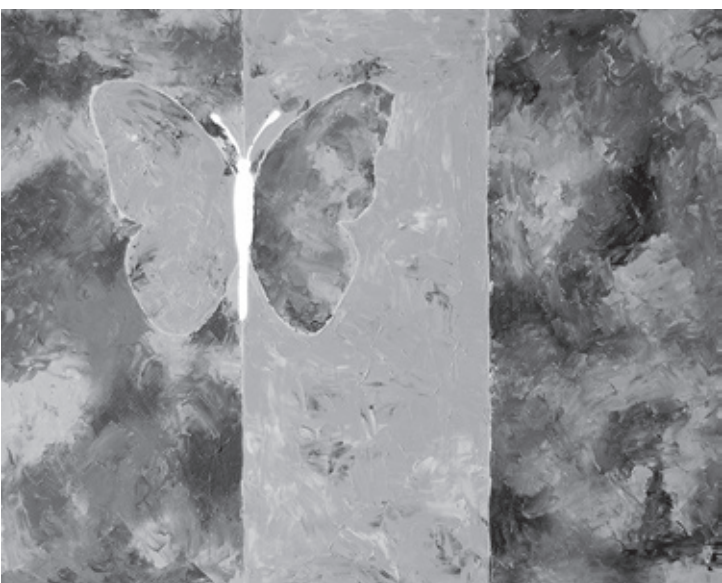


Arts & Entertainment

Exhibits



Recovery Flag Painting-John Sweeney

March Highlighted Artists at East Colony Fine Art

Feature Stained Glass by Susanna Ries and oil paintings by John Sweeney

On exhibit from February 24 thru March 28
Opening Reception on Saturday, March 7, 1-4pm

MANCHESTER – Inspiration for this exhibit started with the collaboration between Susanna and John when they discovered the mutual love of birds. It was a natural and enthusiastic collaboration on a bird themed show. Each artist uses a very colorful palette of colors in either glass or oil paint so they knew that together, their work would complement the other.

Stained glass has always been a magical form of artistry for Susanna. The light play that happens when a piece of stained glass is illuminated fills her with delight. Her love of birds and natural wildlife adds to designs. I love to capture the beauty of the bird's feathers and their shapes. "Nature has always been a passion for my glass designs."

John is primarily a studio artist in oils but he does travel quite a bit with his camera and telephoto lens and uses what he can for painting references from his photos". He has also requested permission from several World renowned Wildlife photographers to allow him use of their work as a reference which he is extremely grateful for. He has always loved and been fascinated by birds since his childhood and is drawn to working in bright overly saturated colors to help stimulate and move the spirit of the art into a positive direction. "I find using bright and playful colors completely therapeutic."

John is also on the Board of Directors of HOPE for NH Recovery an organization fighting substance use disorder in the State of NH. He also designed the first ever symbol for Recovery from Substance Abuse, the Recovery Flag, which has been presented to Governor Hassan and will be used in future Recovery Centers across the State.

Join Susanna and John at their reception for "Flying Colors" on Saturday, March 7, 1-4pm.

East Colony Fine Art is located in Langer Place, 55 South Commercial Street, Manchester, NH. Regular gallery hours: Tuesday-Friday 11-5 and Sat 11-3. Phone: 603-621-7400.

Reminder

The Adventure Begins!



Xanna Bader (Tinker Bell), Matt McCann (Captain Hook), Lucy Stover (Wendy), Mitchell Jacobs (Peter Pan).

Amherst Middle School Presents "Disney's Peter Pan, Jr."

This fun, colorful production comes to the Amherst Middle School on March 12th, 13th and 14th. The script is a modern retelling of the classic Disney movie. While keeping the high-energy antics from the original, this new Peter Pan adds a healthy dose of Girl Power. You'll see Wendy, Tinker Bell and Tiger Lily in a whole new light. And you can sing along with old favorites such as "Following the Leader," "You Can Fly" and "The Second Star to the Right."

One of the most recognizable stories of all time, Disney's Peter Pan, Jr. is expected to draw large audiences. It was a natural fit for this

age group, says Denise Jacobs, producer and assistant director. "We read many scripts. We look for a good mix of humor and heart, and a nice middle school message. When we find all of these things in one musical, we know we have a winner! And who doesn't love pirates and Indians?"

Performances will be held on March 12th, 13th and 14th at 7:00pm, with a 2:00pm matinee on the 14th. Tickets for this special production will be available at The Black Forest Café, The Homestead and Amherst Middle School. Don't forget the pixie dust!

New Hampshire Philharmonic March 15th Performance

MANCHESTER - For the 10th year in a row, The NH Phil's Drawn to the Music program brings classical music to school children of New Hampshire. This year, students will create drawings depicting composer Jennifer Higdon's "Blue Cathedral." The artwork will be presented alongside the piece during The NH Phil's upcoming concert on Sunday, March 15 at 3 p.m. at the Palace Theatre Manchester.

The concert program, opening with Shostakovich's "Festive Overture" and concluding with Tchaikovsky's rousing Fourth Symphony, also features The NH Phil's 2014 concerto composition winner, Stacie Lin.

Lin, of Bedford, NH, will perform the first movement of Tchaikovsky's violin concerto. She began studying the violin when she was three and a half and won first place in her instrument at the 2009 Taiwan Music Competition when she was in fifth grade. In the spring of 2014, Stacie won three concerto competitions throughout New Hampshire: the Portsmouth Symphony Orchestra Young Artist Concerto Competition, the Lakes Region Symphony

Orchestra Concerto Competition, and the NH Philharmonic's Twelfth Annual Youth Concerto Competition. Stacie has performed as soloist with the Granite State Symphony Orchestra, the UMass Lowell Concert for Hope Orchestra, the PSO, and the LRSO.

Leading the orchestra is Music Director Mark Latham. He received his musical training at the Guildhall School (London), Philadelphia College of Performing Arts, Brooklyn College Conservatory, and the University of Michigan. He trained in violin and chamber music at Eastman, Juilliard, Aspen Music Festival and Banff Festival.

The concert takes place on March 15 at 3 p.m. at the Palace Theatre in Manchester, NH. Tickets are available through the Palace Theatre box office at 437-5210, or online at www.nhphil.org. Standard ticket prices range from \$12- \$50, with discounts available for seniors. Students from elementary to college are \$5.

Complete information about the 110th season of the New Hampshire Philharmonic can be found at www.nhphil.org.

Please let our advertisers know that you saw their ad in The Amherst Citizen. It is with their generous support that helps make this community newspaper possible.



Kevin Linkroum, Kimberly Miller, Anja Ward

MAP Presents Death by Design at the Amato Center for the Performing Arts

Milford Area Players, winner of the 2013 New Hampshire Theatre Award for Best Production in Drama/Comedy for Community Theatre, is proud to present Death by Design by Rob Urbinati at the Amato Center for the Performing Arts, 56 Mont Vernon Street, Route 13N, Milford, March 13 - 22.

What happens when you mix the brilliant wit of Noel Coward with the intricate plotting of Agatha Christie? Set during a weekend in an English country manor in 1932, Death by Design is a delightful and mysterious " mash-up" of two of the greatest English writers of all time. Edward Bennett, a playwright, and his wife Sorel Bennett, an actress, flee London and head to Cookham after a disastrous opening night. But various guests arrive unexpectedly – a conservative politician, a fiery socialist, a nearsighted ingenue, a zany modern dancer – each with a long-held secret. When one of the guests is murdered, it's left to Bridgit, the feisty Irish maid with a macabre interest in homicide, to solve the crime. Death by Design is more than homage – it's a new classic.

"Death by Design is definitely a major must-see." - The Forecaster

"These characters have some great lines to deliver...and the conversation takes some entertaining digs at theater itself, as well as the archetypes of the British class system." - The Portland Phoenix

The cast of Death by Design includes Kelly Lit of Dunbarton; Anja Ward of Derry, Amy Agostino of Londonderry; Katie Hammes of Milford; Kevin Linkroum, Kimberly Miller, and Billy Pomerleau of Nashua; and Gary Trahan of Manchester. The play is directed by Val Verge of Hudson.

Death by Design will be staged by the Milford Area Players for two weekends, March 13-22, with shows on Fridays and Saturdays at 8 pm and Sundays at 2 pm. General admission tickets are \$15 for adults, \$10 for seniors (60+) and students. Advance tickets are available at Toadstool Bookshop and online at www.MilfordAreaPlayers.org. Tickets are also available at the door. The theater is air-conditioned and wheelchair accessible.

More information is available at our website www.MilfordAreaPlayers.org, on our Facebook page at Milford Area Players, or by calling director Val Verge at 533-8999.

Call to Artists!

HOLLIS – Wild Salamander Creative Arts Center is looking for art for our new show "BLOOM! Flourish and thrive beyond expectations and boundaries". We are asking artists to push beyond their own expectations and boundaries to inspire the viewer. We are seeking original art, sized 20" x 20" and under (including frame). All media are eligible, including textiles, framed prints and sculpture. All artwork must be wired to hang on the wall and meet size restrictions. Show dates are March 13th - May 9th, with drop off dates for artwork on March 6th, 7th and 10th. Up to 2 pieces may be submitted for \$5.00 per piece. For more information visit our website at www.wildsalamander.com, call 465-WILD (9453) or email us at gallery@wildsalamander.com.

Peterborough Folk Music Society

www.pfmsconcerts.org
www.pfmsconcerts.org
318-9196

The Pine Hill Project
Sunday, March 8, 7:00pm
Peterborough Players Theatre
www.flemingartists.com/artists/pine-hill-project

PETERBOROUGH – Lucy Kaplansky and Richard Shindell have been singing together for 25 years. And they've talked about making a record together for just as long. In summer 2014 an extraordinarily successful Kickstarter campaign raised the initial goal of \$40,000 in 24 hours, going on to ultimately reach over \$85,000, to bring that desire to fruition under the band name "The Pine Hill Project."

Tomorrow You're Going, an Americana masterwork of great songs, gorgeous harmonies, and

Richard Shindell & Lucy Kaplansky To Perform at Peterborough Players Theatre

stunning production will be released in 2015. The album is at turns meditative, joyful, rollicking, and deeply moving, and a one of a kind musical event.

Lucy and Richard's voices have always understood each other. It feels like they have a mind of their own. The one instinctively finds its resolution in the other. The simple pleasure of blending these two voices has been a constant for each of them through all the twists and turns of their respective careers.

Lucy and Richard are songwriters—each with many solo albums of original songs. But they are also fans of great songs. For both of them, the discovery of a great song can be as exciting as writing their own. In both cases, they inhabit the song by singing it, falling under its spell, its logic, its mood.

Peterborough Players Professional Theatre established in 1933 is located at 55 Hadley Road, Peterborough, NH 03458, Box Office: 603-924-7585. For information: www.peterboroughplayers.org.



March Bach's Lunches to Feature Songs of Love and Heartbreak from Musical Theatre

CONCORD —Songs of love and heartbreak from Broadway and beyond will be the theme for the next two installments in the Bach's Lunch Series of lectures and concerts at the Concord Community Music School.

On March 12, Music School faculty members Hannah Murray, soprano, and Calvin Herst, piano, will

present "Can't Help Lovin' That Man: Love and Heartbreak at the Theatre." Bach's Lunch programs are free and open to the public, and take place from 12:10 to 12:50 p.m. in the Music School's Recital Hall, 23 Wall Street, downtown Concord.

On March 12, Hannah Murray and Calvin Herst will present a concert of songs about the love you

want... and the love you don't. The program will span nearly 100 years of love songs from American musical theatre, and will include a number of McDonald's well-loved musical theatre selections, including "Stars and the Moon," "Somewhere that's Green," and "Can't Help Lovin' That Man o' Mine," among others.

The Bach's Lunch Series is sponsored by The Timothy and Abigail B. Walker Lecture Fund and The Couch Trusts; TD Wealth Management, NA; Trustee. For more information, call 228-1196 or visit www.ccmusicschool.org.

Amherst Middle School Theater Club presents...

So much adventure can happen in one night!

Thursday, March 12th at 7:00 pm
Friday, March 13th at 7:00 pm
Saturday, March 14th at 2:00pm and 7:00 pm

Tickets go on sale on January 31st for \$5 at
The Homestead, The Black Forest Café and AMS Office